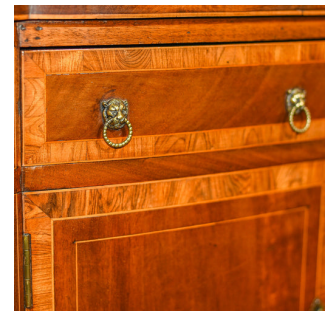


Late Victorian Bow Fronted Sideboard, c.1900



DESCRIPTION

Our Stock # LFA-1333 This is an antique, late Victorian bow fronted sideboard dating to c.1900. A superior quality piece in a Sheraton revival style, full of interest and detail. This sideboard is made in quality cuts of mahogany displaying warm amber tones and good grain detail throughout. Raised on tapering square section legs with boxwood inlaid strings this cabinet offers two square cupboards with three, oak lined, drawers over, the central drawer sitting above a knee-hole with corner brackets decorated with shell detail. A shaped backboard signs of attention to detail and quality. The cupboard doors and drawers are crossbanded and strung, dressed with pressed brass leopard heads with circular, beaded pulls. The top surface features the most wonderful grain detail with stringing to the border and edges. To the rear a simple up-stand picks up the string detail and completes the look. A good quality piece with solid joints and construction, delivered waxed, polished and ready for the home.

Search [London Fine](#) for #LFA-1333 or scan the QR code for more photos and details

DIMENSIONS

Max Width: 135.5cm (53.25")
 Max Depth: 54.5cm (21.5")
 Surface Height: 86cm (33.75")
 Upstand: 6cm (2.25")

