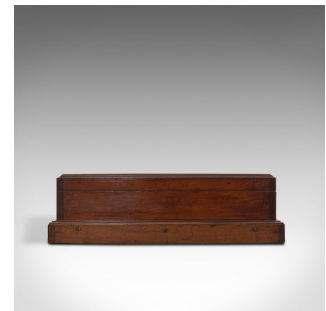


## Antique Shop's Countertop Bijouterie Case, Walnut, Display Cabinet, Victorian



## DESCRIPTION

Our Stock # 18.7204

This is an antique shop's countertop bijouterie case. An English, walnut and glass retail display cabinet, ideal for jewellery, dating to the Victorian period, circa 1870.

- Beautifully crafted Victorian display showcase
- Displaying a desirable aged patina - in very good antique condition
- Select walnut boasts fine grain interest and rich russet hues beneath the wax polish finish
- Superb bevelled glass; light marks consistent with use
- Broad lid opens smoothly and rests upon a brass chain stay
- Leather covered base can be removed to store important documents within a secret compartment
- Front fascia dressed with a small, shield-shaped iron lock escutcheon — key absent
- Standing upon a stout continuous plinth base

This is an attractive antique shop's bijouterie case, ideally suited to displaying jewellery or small collectibles in the home or retail environment. Solid joints and construction, delivered waxed, polished and ready to display.

## DIMENSIONS

Max Width: 48cm (19")  
Max Depth: 48cm (19")  
Max Height: 14.5cm (5.75")  
Interior Width: 42cm (16.5")  
Interior Depth: 41.5cm (16.25")  
Interior Height: 7cm (2.75")



Search [London Fine](#) for #18.7204, or scan the QR code for more photos and details

+44 (0) 207 1833 511

London Fine Ltd  
The Antique Village  
The Old Whiteways Cider Factory  
Hele, Devon, EX5 4PW

[sales@londonfine.co.uk](mailto:sales@londonfine.co.uk)  
E. & O. E.