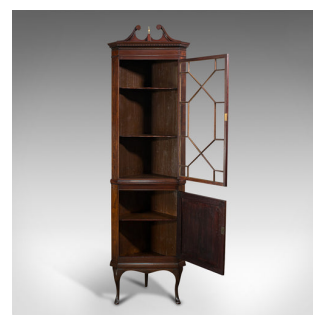


Rare, Tall Antique Corner Cabinet, Mahogany, Cupboard, Georgian Revival, C.1880



DESCRIPTION

Our Stock # 18.7140

This is a rare, tall antique corner cabinet. An English, mahogany display cupboard on base in Georgian revival taste, dating to the Victorian period, circa 1880.

- Impressive and of room height at 7'
- Displaying a desirable aged patina - in very good order throughout
- Select mahogany presents fine grain interest and rich russet hues beneath a wax polish finish
- Astragal glazed upper door with clear, bright glass plate
- Graceful double swan neck pediment stands prominently over the whole
- 13 pane upper door dressed with a working inset lock – key present
- Interior arranged as a pair of bow-fronted shelves
- Plinth base to upper cabinet affords potential for wall mounting
- Attractive cabinet base with field panel door and untested inset lock – key absent
- Useful, single shelf to the cabinet interior adds further versatility
- Raised upon a pair of slender cabriole legs with serpentine apron - tapered foot to rear

DIMENSIONS

Max Width: 64.5cm (25.5")
 Max Depth: 39.5cm (15.5")
 Max Height: 215cm (84.75")



Search [London Fine for #18.7140](#), or scan the QR code for more photos and details