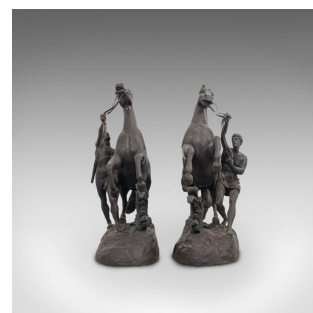
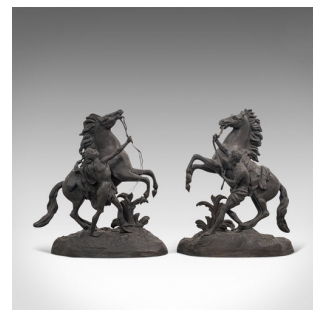


Collectible Antique Pair, Marly Horses, French, Bronze, Equine, Statue, Coustou



DESCRIPTION

Our Stock # 18.7160

This is a dashing, collectible antique pair of Marly horses. A French, bronze equine statue in the manner of Guillaume Coustou (1677-1746), dating to the late 19th century, circa 1900.

- Excellent representations of the famous Marly horses - on display in the Louvre
- Each displaying a desirable aged patina - pleasingly natural finish
- Appreciably heavy bronze in very good original condition
- Weighing 7.74kg and 7.70kg respectively (approximately 17lb each)
- Two horses rear up as their grooms struggle to contain their inherent power
- The majesty of each horse resplendent with their sense of dynamism
- Defined, muscular haunches beneath detailed horse tack
- Further embellished with flowing manes and swishing tails
- Each groom with a look of surprise and fear at the ensuing situation
- Representative miniature leather reigns unite them with the animal
- The originals commissioned by King Louis XV, for the gardens of the Chateau de Marly

Marly

Search [London Fine for #18.7160](#), or scan the QR code for more photos and details

DIMENSIONS

Max Width: 35cm (13.75")

Max Depth: 14cm (5.5")

Max Height: 38cm (15")

LIST PRICE

£5,350.00

