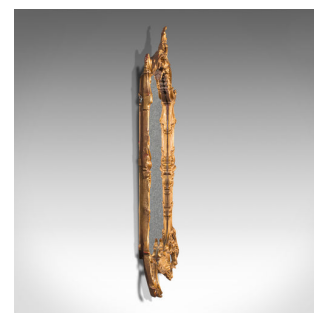


Vintage Wall Mirror, English, Gilt, Glass, Rococo Taste, Mid 20th, Circa 1950



DESCRIPTION

Our Stock # 18.7078

This is a vintage wall mirror. An English, gilt and glass mirror in the Rococo revival taste, dating to the mid 20th century, circa 1950.

- Italianate elegance with beautiful tones
- Displaying a desirable aged patina
- Eye-catching gilt frame dazzles with golden hues
- Mirror plate shows a desirable light foxing commensurate with age
- Flowing scrolled detail to the ornate frame
- Oak leaf detail to the open surmount stands over the whole
- Issuing prominent scrolled corners and natural motif across the frame
- Fascinating lion's head masque to the lower edge
- Ready to mount upon the wall with hanging wire to rear

This is an attractive vintage wall mirror, with dashing Rococo influence to its Italianate frame. Ideally suited above the mantelpiece or within the entrance hall. Delivered polished and ready to hang.

Search [London Fine for #18.7078](#) , or scan the QR code for more photos and details

DIMENSIONS

- Max Width: 60.5cm (23.75")
- Max Depth: 5.5cm (2.25")
- Max Height: 86cm (33.75")
- Mirror Plate Width: 45cm (17.75")
- Mirror Plate Height: 65.5cm (25.75")

