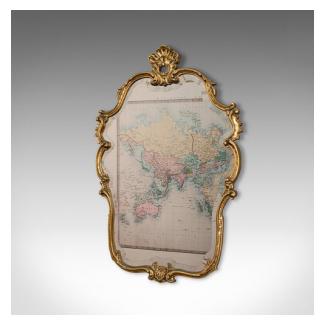
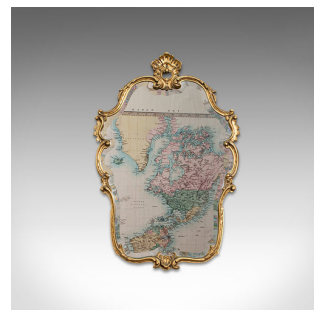


Large Ornate Vintage Mirror, English, Gilt, Hall, Overmantel, Rococo Taste, 1970



DESCRIPTION

Our Stock # 18.7312

This is a large, ornate vintage wall mirror. An English, gilt and glass hall or overmantel mirror with Rococo taste, dating to the late 20th century, circa 1970.

- Elegant, expressive frame with a fine reflective quality
- Displays a desirable aged patina - frame and plate in good order
- Gilt frame radiates rich golden tones and of pleasingly slim profile
- Generously sized, original mirror plate free of marks and offering minimal foxing
- Plume of feathers surmount standing prominently above the whole
- Scrolled flourishes decorate the frame, with small shield motif to base
- Delightful bevelled glass displaying a superior, sharp reflection
- Ready for wall hanging with mounting wire to rear

This is a dashing vintage wall mirror, of generous proportion and with rich colour. Delivered polished and ready to grace a grand entrance hall or fireplace.

Search [London Fine for #18.7312](#) , or scan the QR code for more photos and details

DIMENSIONS

Max Width: 63cm (24.75")
Max Depth: 3cm (1.25")
Max Height: 94cm (37")
Mirror Plate Width: 56.5cm (22.25")
Mirror Plate Height: 75.5cm (29.75")

