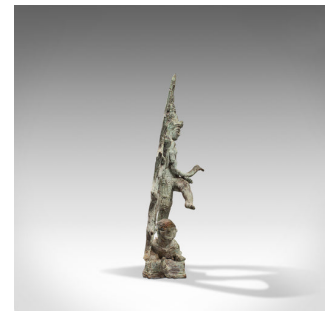
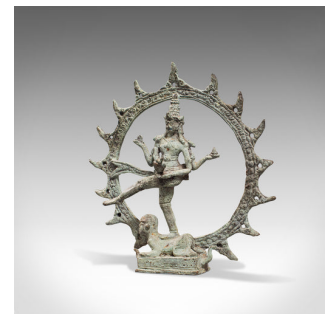


Antique Shiva Nataraja Figure, Indian, Chola Bronze, Mystic Statue, 17th Century



DESCRIPTION

Our Stock # 18.7228

This is a beguiling antique Shiva Nataraja figure. An Indian, bronze mystic statue standing upon Apasmarapurusa or the 'Dwarf of Ignorance', dating to the 17th century. Centuries old and beautifully aged, this figure depicts Shiva as the lord of dance and dramatic arts. A staple of Shivaism, a celebration of Shiva as the supreme being.

- Displaying a desirable aged patina - natural weathering offering copious interest
- Chola bronze with 400 years of patination and striking colouration
- Shiva presented with a Nyastra dance pose, standing upon the right leg with the left raised
- Circular Agni or fire motif surrounding the whole
- The figure stands upon a prone rendition of Apasmarapurusa, signifying ignorance

This is a striking, historically fascinating antique Shiva Nataraja figure. Steeped in Eastern mysticism and weathered beyond compare, this is a superb collectible statue and a conversation piece. Delivered ready to showcase.

Search [London Fine for #18.7228](#), or scan the QR code for more photos and details

DIMENSIONS

Max Width: 22.5cm (8.75")

Max Depth: 7cm (2.75")

Max Height: 23.5cm (9.25")

