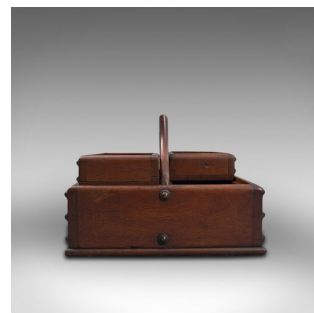


Antique Cobbler's Carry Tray, English, Mahogany, Tool Box, Cutlery, Edwardian



DESCRIPTION

Our Stock # 18.7301

This is an antique cobbler's carry tray. An English, mahogany tool box or cutlery tray, dating to the Edwardian period, circa 1910.

- Delightful carry tray with attractive form
- Displays a desirable aged patina – in good original order
- Select mahogany offers fine grain interest
- Rich russet hues beam beneath a wax polish finish
- Gently arched carry handle with comfortable pierced grip
- Pair of useful sliding trays can be removed as required
- Charming exposed bolts to corners catch the eye

This is an antique cobbler's carry tray. Versatile and appealing, this tray could also serve within the kitchen or a charming way to display antique tools. Solid joints and construction, delivered waxed, polished and ready to serve.

Search [London Fine for #18.7301](#) , or scan the QR code for more photos and details

DIMENSIONS

Max Width: 43cm (17")
Max Depth: 27.5cm (10.75")
Max Height: 20.5cm (8")
Interior Width: 39.5cm (15.5")
Interior Depth: 10cm (4")
Interior Height: 8.5cm (3.25")
Tray Interior Width: 22cm (8.75")
Tray Interior Depth: 9cm (3.5")
Tray Interior Height: 3.5cm (1.5")

