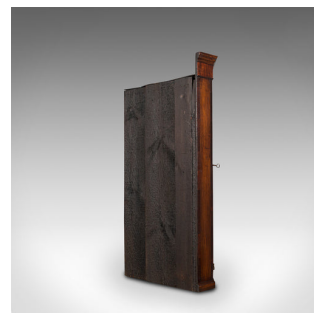
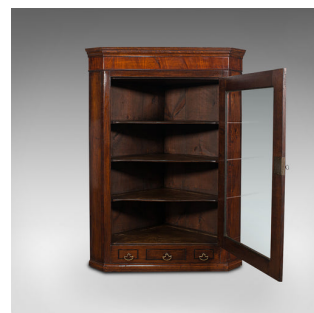


Antique Corner Cabinet, English, Oak, Flame Mahogany, Cupboard, Georgian, C.1800



DESCRIPTION

Our Stock # 18.7286

This is a superb antique corner cabinet. An English, oak and flame mahogany display cupboard, dating to the Georgian period, circa 1800.

- Rich colour and fine Georgian craftsmanship
- Displaying a desirable aged patina
- Select oak offers fine grain interest beneath a quality wax polish finish
- Clear, bright glass pane in good order
- Stout crown with tiered moulding over a striking, flame mahogany apron
- Glazed door dressed with a pierced brass lock escutcheon over working, inset lock – key present
- Interior arranged as three bow-front shelves with appealing figuring
- Central drawer to base flanked by a pair of faux fronts, each with shaped brass drop handles

This is an elegant antique corner cabinet, with beautiful stocks and deep colour. Sure to grace any room, this cabinet is a testament to the lasting appeal of fine Georgian craftsmanship. Solid joints and construction, delivered waxed, polished and ready for the home

DIMENSIONS

Max Width: 82.5cm (32.5")

Max Depth: 49cm (19.25")

Max Height: 113cm (44.5")



Search London Fine for #18.7286, or scan the QR code for more photos and details.

+44 (0) 207 1855 511

London Fine Ltd
 The Antique Village
 The Old Whiteways Cider Factory
 Hele, Devon, EX5 4PW

sales@londonfine.co.uk

E. & O. E.