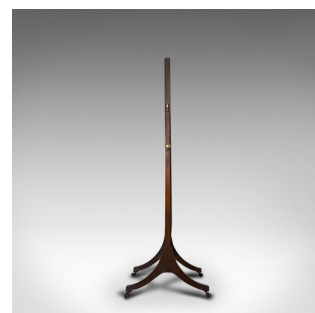
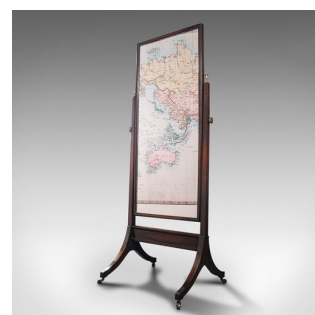


Antique Dressing Mirror, English, Oak, Glass, Bedroom, Cheval, Edwardian, C.1910



DESCRIPTION

Our Stock # 18.7244

This is an antique dressing mirror. An English, oak and glass bedroom cheval mirror, dating to the Edwardian period, circa 1910.

- Presenting an elegant dressing mirror for the home or retail environment
- Displays a desirable aged patina and in very good order
- Select oak shows fine grain interest and wisps of medullary rays
- Tall, adjustable angle mirror plate with a desirable light foxing
- The mirror presents a clear, bright reflection
- Small brass finials adorn the slim upstands either side of the mirror
- Circular adjustment knobs with basket-weave medallion finish
- Raised upon splayed legs with a set of four brass castors

This is an attractive antique dressing mirror, of fine appeal and useful proportion for the bedroom or a quality establishment. Solid joints and construction, delivered waxed, polished and ready for the home or retail shop.

Search [London Fine for #18.7244](#) , or scan the QR code for more photos and details

DIMENSIONS

- Max Width: 60.5cm (23.75")
- Max Depth: 53.5cm (21")
- Max Height: 155.5cm (61.25")
- Mirror Plate Width: 45cm (17.75")
- Mirror Plate Height: 111cm (")

