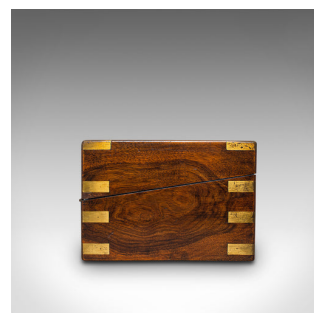
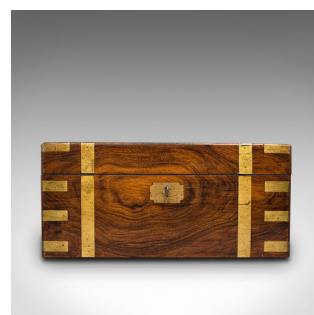


Antique Writing Slope, English, Mahogany, Brass, Correspondence Box, Victorian



DESCRIPTION

Our Stock # 18.7288

This is a delightful antique writing slope. An English, quality mahogany and brass correspondence box, dating to the late Victorian period, circa 1895.

- Strikingly attractive with secret compartment appeal
- Displaying a desirable aged patina and in good original order
- Select mahogany offers exquisite grain interest and rich caramel hues
- Dressed with pleasingly weathered brass offering a bright polished shine
- Shield-shaped name plaque to lid reads 'A. Ness Walker, Richmond Yorks, Xmas 1895'
- Similarly shaped lock escutcheon with inset working lock – key present
- The interior presents a two-piece black leather skiver with quality gold tooling
- Each half lifts to reveal paper document compartments and beam beneath a wax polish finish
- Fountain pen tray with a pair of ink well repositories - pen tray with hidden recess beneath
- Further concealment by way of fascinating hidden compartments operated by mechanism
- Lifting the ink well divider operates a latch, the lower cover hiding a pair of small sliding trays

DIMENSIONS

Max Width: 34.5cm (13.5")
 Max Depth: 23cm (9")
 Max Height: 16.5cm (6.5")
 Slope Width: 34.5cm (13.5")
 Slope Depth: 46.5cm (18.25")
 Slope Height: 12cm (4.75")



+44 (0) 207 1833 511

Search London Fine for #18.7288, or scan the QR code for more photos and details

London Fine Ltd
 The Antique Village
 The Old Whiteways Cider Factory
 Hele, Devon, EX5 4PW

sales@londonfine.co.uk

E. & O. E.