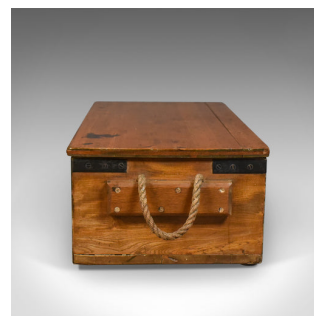


## Antique Boat Builders Chest, English, Victorian, Pitch Pine, Trunk, Circa 1900



## DESCRIPTION

Our Stock # LFA-1730

This is an antique boat-builders chest, an English, Victorian pitch pine trunk dating to circa 1900.

- Mellow tones to the pitch pine boards
- Featuring teak end panels for added strength
- Iron bound with a quality lock, plate and latch, key absent
- Raised on a pair of slides to clear the deck and make for easy movement
- A pair of substantial rope handles dress the end panels
- The lid lifting on expertly cut-in strap hinges, a sign of the quality of this piece
- The inside of the lid fitted with saw bars
- The chest interior largely empty but for a suite of bespoke tool locators

A wonderfully weight trunk that would make a great low, coffee table. Solid joints and construction, delivered waxed, polished and ready for the home.

Search [London Fine for #10.1730](#) , or scan the QR code for more photos and details

## DIMENSIONS

Max Width: 97cm (38.25")

Max Depth: 46cm (18")

Max Height: 31cm (12.25")

