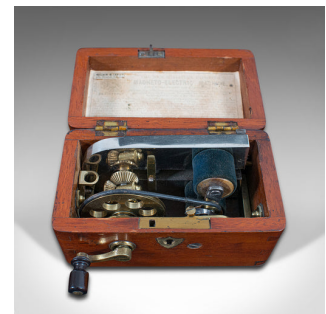


## Small Antique Electric Therapy Machine, English, Scientific, Medical, Victorian



### DESCRIPTION

Our Stock # 18.7320

This is a small antique electric therapy machine. An English, mahogany cased patent scientific medical aid, dating to the late 19th century, circa 1900.

- Diminutive Victorian medical machine offering superb display interest
- Displaying a desirable aged patina and in good order throughout
- Select mahogany case showing fine grain interest beneath a wax polish finish
- Bright brass mechanism with an eye-catching rotary action and attractive crown gears
- The principle of turning the handle would create mild electrical shocks for the patient
- The patented intention was to help with long-term headaches and other maladies
- Detailed label to the lid interior offers insight into the purpose of the machine
- With a Milliken & Lawley of London mark, medical equipment specialists of the Victorian period

This is an intriguing antique electric therapy machine with pleasingly compact proportions. A fascinating insight into the field of Victorian medical science, this example is a delightful display piece for those of a scientific interest. Delivered polished and ready to enjoy.

+44 (0) 207 1833 511

Search London Fine for #18.7320, or scan the QR code for more photos and details

London Fine Ltd  
The Antique Village  
The Old Whiteways Cider Factory  
Hele, Devon, EX5 4PW

### DIMENSIONS

Max Width: 12.5cm (5")  
Max Depth: 9.5cm (3.75")  
Max Height: 7cm (2.75")



sales@londonfine.co.uk

E. & O. E.