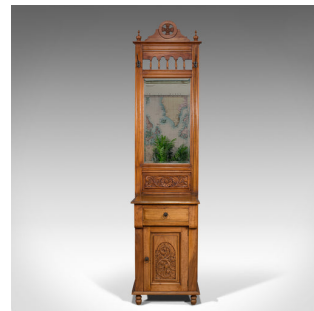


Tall Vintage Hall Stand, English, Walnut, Edwardian Revival, Mirror, Late 20th



DESCRIPTION

Our Stock # 18.7063

This is a tall vintage hall stand. An English, walnut and mahogany stand in Edwardian revival taste and of narrow profile with mirror, dating to the late 20th century.

- Impressively tall at a height of 7'
- Displaying a desirable aged patina
- Walnut and mahogany offer rich caramel hues beneath a wax polish finish
- Original mirror plate displays a desirable light foxing and clear reflection
 - Circular carved surmount in the manner of a foliate cross, framed by a pair of baluster finials
- Galleried upper fascia with two useful, slender coat hooks
- Original bevelled mirror plate with bright optics and of generous proportion
- Carved frieze beneath mirror with large flowerhead issuing scrolled leaf detail
- Arranged as a small drawer over a mid-size pot cupboard
- Dressed with iron drop handles against distinctive star anise backplates
 - Dome top field panel carving depicting flowing vine leaves against a decorated ground

DIMENSIONS

Max Width: 50cm (19.75")
 Max Depth: 42.5cm (16.75")
 Max Height: 214cm (84.25")
 Mirror Plate Width: 36cm (14.25")
 Mirror Plate Height: 67cm (26.5")



Search [London Fine for #18.7063](#), or scan the QR code for more photos and details