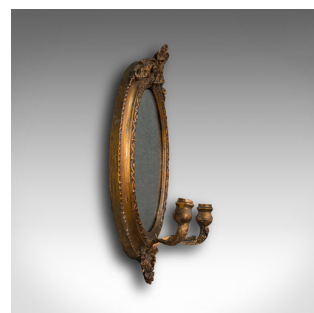
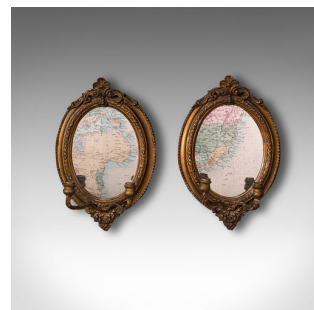


Pair of Antique Girandole Mirrors, English, Giltwood, Oval, Wall, Regency, 1820



DESCRIPTION

Our Stock # 18.7325

This is a delightful pair of antique girandole mirrors. An English, giltwood oval wall mirror with mercury plates, dating to the Regency period, circa 1820.

- Striking examples offering warm colour and superb Regency taste
- Displaying a desirable aged patina and in good original order
- Inviting giltwood radiates deep, warm golden tones
- Mercury mirror plates with sparkling appearance to the desirable light foxing
- Ornate oval frame with domed form and decorative appeal
- Plume of feathers surmount with flowing scrolled motif
- Continuous border pattern enhances the fascia surrounding the mirror plate
- Bright mercury plates presenting a clear reflection
- Pair of candle holders distinct to the girandole mirror
- Issuing forth upon serpentine leaf forms with bulbous cups
- Candle opening diameter of 25mm (1")

Search [London Fine for #18.7325](#) , or scan the QR code for more photos and details

DIMENSIONS

Max Width: 31.5cm (12.5")
 Max Depth: 14.5cm (5.75")
 Max Height: 48cm (19")
 Mirror Plate Width: 21cm (8.25")
 Mirror Plate Height: 28.5cm (11.25")

