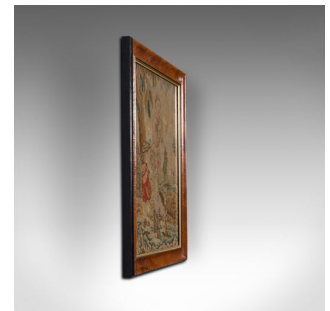


Antique Tapestry Panel, English, Needlepoint, Burr Walnut, Decorative, C.1800



DESCRIPTION

Our Stock # 18.7092

This is an antique tapestry panel. An English, needlepoint and burr walnut decorative scene, dating to the late 18th century and later, circa 1800.

- Fascinating antique tapestry presented within a quality later frame
- Displaying a desirable aged patina
- Needlepoint tapestry in very good order with a natural colour palette
- Striking burr walnut frame shows fine grain interest with ebonised frame edges
- Clear, bright glass plate presenting the scene beautifully
- Human and canine interest, set within a woodland glade
- Can be wall mounted, with hanging wire present to rear

This is a charming antique tapestry panel, with attractive burr walnut frame and rich colouration. Delivered polished and ready to hang.

Search [London Fine for #18.7092](#) , or scan the QR code for more photos and details

DIMENSIONS

Max Width: 46cm (18")
Max Depth: 3cm (1.25")
Max Height: 51cm (20")
Panel Width: 37cm (14.5")
Panel Height: 42cm (16.5")

