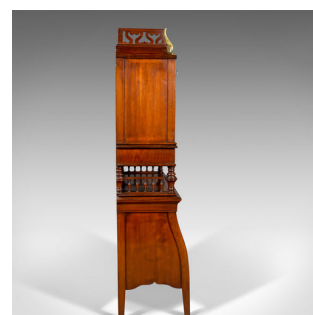


Antique Bureau Cabinet, English, Edwardian, Walnut Cupboard, Circa 1910



DESCRIPTION

Our Stock # 11.3487

This is an antique bureau cabinet, an English, Edwardian, walnut cupboard dating to circa 1910.

- A craftsman's piece in solid walnut
- Delightful colouration and desirable aged patina
- Of good proportion and practical use
- Standing upon square section legs
- A proud, lower, tambour fronted cupboard space
- Smooth action to lift tambour with inside usefully divided into three
- Above, a galleried shelf featuring stout risers and vase turned spindles
- A single, full width frieze drawer over
- Dressed with solid brass drop handle
- Drawer fitted with baize rests to carry the fall when lowered
- Twin field panels dress the fall of the upper cabinet

Search [London Fine for #11.3487](#) , or scan the QR code for more photos and details

DIMENSIONS

Max Width: 72cm (28.25")

Max Depth: 31cm (12.25")

Max Height: 120cm (47.25")

LIST PRICE

£1,695.00

