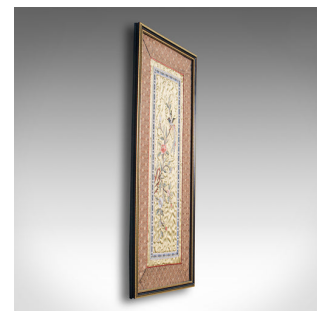
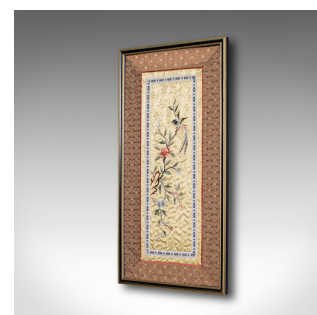
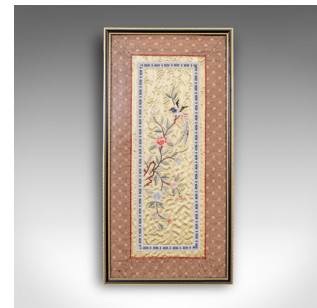


Antique Decorative Silk Panel, Chinese, Framed Needlepoint Tapestry, Circa 1900



DESCRIPTION

Our Stock # 18.7323

This is an antique decorative silk panel. A Chinese, framed needlepoint tapestry display, dating to the late 19th century, circa 1900.

- Superb Oriental decorative appeal
- Displaying a desirable aged patina
- Silk cotton ground with needlepoint tapestry decoration
- Later, quality gilt and ebonised frame with glass plate in very good order
- Depicts a flowering spring tree being visited by a small bird
- Small secondary borders in blue over white with an outer red pinstripe for contrast
- Circular geometric border with shimmers of golden tones
- Supplied with hanging wire for ease of wall mounting

This is a striking antique decorative silk panel, with wonderful Oriental scenes and craftsmanship. Delivered polished and ready for the wall.

Search [London Fine for #18.7323](#), or scan the QR code for more photos and details

DIMENSIONS

Max Width: 25cm (9.75")

Max Depth: 2cm (.75")

Max Height: 50cm (19.75")

