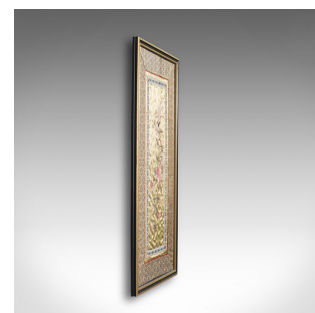
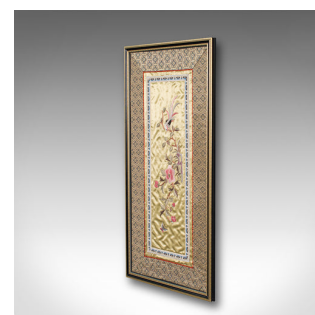
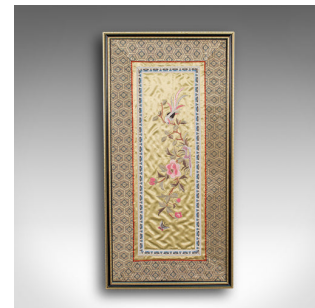


## Antique Embroidered Silk Panel, Chinese, Framed Decorative Needlepoint Tapestry



### DESCRIPTION

Our Stock # 18.7324

This is an antique embroidered silk panel. A Chinese, framed decorative needlepoint tapestry, dating to the late 19th century, circa 1900.

- Eye-catching Oriental display panel
- Presenting a desirable aged patina
- Golden silk cotton ground with needlepoint tapestry decor
- Later, quality gilt and ebonised frame with glass plate in very good order
- Classic Oriental flowering plant being visited by a small bird and lone butterfly
- Pair of decorative borders in blue over white and smaller outer pinstripe in bright crimson
- Hexagonal geometric border with shimmers of golden tones and foliate motif
- Supplied with hanging wire to rear for ease of wall mounting

This is a fascinating antique embroidered silk panel, presenting a wonderful Oriental scene and of fine craftsmanship. Delivered polished and ready to hang.

Search [London Fine for #18.7324](#) , or scan the QR code for more photos and details

### DIMENSIONS

Max Width: 25cm (9.75")

Max Depth: 2cm (.75")

Max Height: 50cm (19.75")

