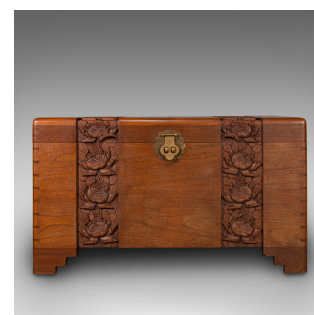


# Vintage Carved Chest, Oriental, Camphorwood, Linen Trunk, Art Deco, Circa 1940



## DESCRIPTION

Our Stock # 18.7107

This is a vintage carved chest. An Oriental, camphorwood and brass linen trunk with Art Deco taste, dating to the mid 20th century, circa 1940.

- Profusely carved and of substantial proportion
- Displaying a desirable aged patina and in very good order
- Camphorwood shows fine grain interest throughout
- Presented with a quality wax polish finish
- Decorated with two bands of carved peonies from the front and across the lid
  - Wonderfully pronounced flowerheads against a ground of broad leaves and rising stems
- Panels to rear with an alternate carved pattern, issuing roses with continuous leaf motif
  - Naturally finished interior offers light caramel hues and the desirable aroma typical of camphorwood
  - Stout lid held securely by large brass clasp, engraved with flying bird detail and copious leaves
  - Generously sized dovetail joints to each chamfered corner
  - Recessed carved handles taking the form of decorative sea shells

## DIMENSIONS

Max Width: 91.5cm (36")  
 Max Depth: 49.5cm (19.5")  
 Max Height: 51cm (20")

