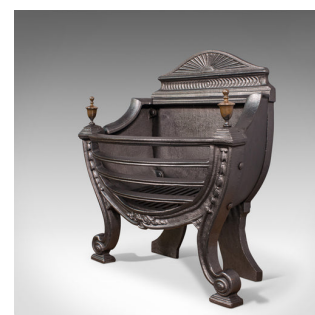


Antique Fire Basket, English, Ornate Cast Iron, Fireplace, Victorian, Circa 1900



DESCRIPTION

Our Stock # 18.7355

This is an antique fire basket. An English, ornate cast iron fireplace with brass finials, dating to the late Victorian period, circa 1900.

- Attractive, free-standing Victorian fireplace
- Displaying a desirable aged patina and in good order
- Cast iron with good consistent graphite finish
- Suitable for all fuel types, including coal and logs
- Upper crown detailed with a rising sun motif over a chased crescent pattern
- Polished brass finials provide fine contrast, standing prominently above the basket
- Fire basket of bow front form with four shaped bars over an open hearth
- Sash garland decorations cast into the front fascia, uniting at the centre
- Removable iron grate to base aids cleaning
- Standing upon a pair of ornate scrolled feet to front beneath cabriole legs
- Gently splayed shaped bracket feet to rear

Search [London Fine for #187355](#) , or scan the QR code for more photos and details

DIMENSIONS

- Max Width: 58cm (22.75")
- Max Depth: 33cm (13")
- Max Height: 62.5cm (24.5")
- Basket Width: 44cm (17.25")
- Basket Depth: 28cm (11")
- Basket Height: 24cm (9.5")

