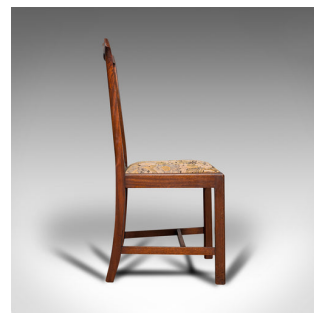


## Pair Of Antique Side Chairs, Mahogany, Hall, Dining Seat, Victorian, Circa 1900



### DESCRIPTION

Our Stock # 18.7391

This is an antique pair of side chairs. An English, mahogany hall or dining seat in the manner of Chippendale, dating to the Victorian period, circa 1900.

- Late Victorian elegance with Chippendale revival taste
- Displaying a desirable aged patina
- Mahogany offering fine grain interest and rich caramel hues
- Drop-in seats with quality, embroidered covering - some small signs of careful use
- Dashing lyre back presented beneath the top rail with its distinctive 'Chippendale ears'
- Traditionally stuffed seat cushions dressed with classic foliate patterns and natural colour palette
- Standing upon square legs at the front, the gently splayed rears cascade from the top rail
- Each united by a H-stretcher within the tapering profile

This is an appealing pair of antique side chairs, with Chippendale overtones and attractive colour. Ready to be enjoyed as is, or suitable for reupholstering to individual taste. Solid joints and construction. Delivered polished and ready for the home

### DIMENSIONS

Max Width: 49cm (19.25")  
 Max Depth: 48cm (19")  
 Max Height: 97.5cm (38.5")  
 Seat Width: 45cm (17.75")  
 Seat Depth: 39cm (15.25")  
 Seat Height: 46cm (18")



Search London Fine for #18.7391, or scan the QR code for more photos and details.  
 +44 (0) 207 1855 511

London Fine Ltd  
 The Antique Village  
 The Old Whiteways Cider Factory  
 Hele, Devon, EX5 4PW

sales@londonfine.co.uk  
 E. & O. E.