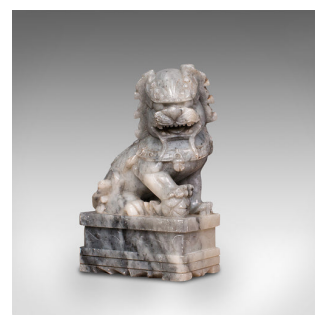


Pair, Antique Decorative Dogs Of Fu, Chinese, Statue, Ornament, Victorian, 1900



DESCRIPTION

Our Stock # 18.7352

This is a pair of antique decorative dogs of fu. A Chinese, soapstone statue or ornament, dating to the late Victorian period, circa 1900.

- Superb, carved soapstone ornaments
- Displaying a desirable aged patina and in very good order
- Gently polished soapstone figures, cool and tactile in the hand
- Opposing pair, suitable for use as bookends or sitting proudly upon the mantel
- Classic upright pose, with left paw raised upon a brocade ball
- Stood upon a vault-shaped socle with carved detail

This is an appealing pair of antique decorative dogs of fu, with wonderful soapstone bodies offering tactility and striking colouration. Delivered polished and ready to display.

Search [London Fine for #18.7352](#) , or scan the QR code for more photos and details

DIMENSIONS

Max Width: 8.5cm (3.25")

Max Depth: 5.5cm (2.25")

Max Height: 14.5cm (5.75")

