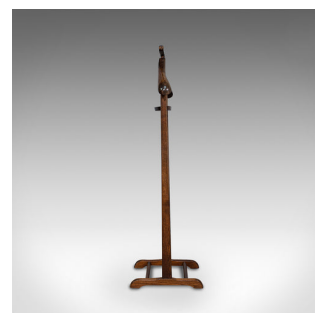
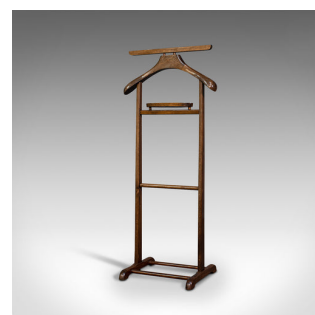
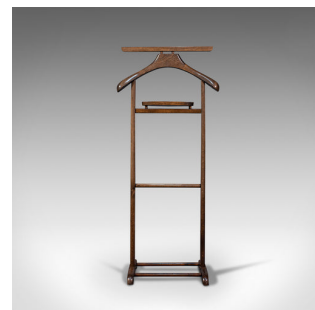


Antique Gentleman's Valet, English, Beech, Bedroom Rack, Nightstand, Edwardian



DESCRIPTION

Our Stock # 18.7372

This is an antique gentleman's valet. An English, beech bedroom rack or nightstand, dating to the Edwardian period, circa 1910.

- Elegant practicality for the master bedroom
- Displaying a desirable aged patina
- Select beech awash with fine grain interest
- Rich caramel hues beam beneath a wax polish finish
- Specified for the smartest of attire, from suits to casual wear
- Wide trouser rail sits above the gently arched coat rack with delightfully chamfered edges
- Small wooden tray of oval form, ideal for the gentleman's watch and jewellery overnight
- Raised upon a pair of long trestle feet with shaped arches, united by stretchers

This is an appealing antique gentleman's valet with the wonderfully figured beech attracting the eye. Solid joints and construction, delivered waxed, polished and ready for the bedroom.

DIMENSIONS

Max Width: 47cm (18.5")

Max Depth: 32.5cm (12.75")

Max Height: 106.5cm (42")



Search [London Fine](#) for #18.7372, or scan the QR code for more photos and details

+44 (0) 207 1833 511

London Fine Ltd
The Antique Village
The Old Whiteways Cider Factory
Hele, Devon, EX5 4PW

sales@londonfine.co.uk
E. & O. E.