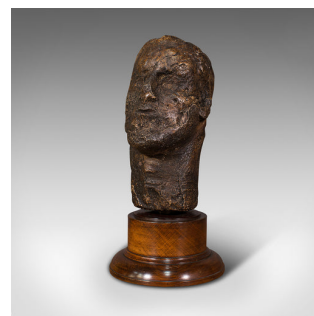


Antique Male Portrait Bust, Continental, Plaster, Sculpture, Victorian, C.1860



DESCRIPTION

Our Stock # 18.7393

This is an antique male portrait bust. A Continental, plaster sculpture presented upon an oak base, dating to the mid Victorian period, circa 1860.

- Of striking appearance with shimmering tones and raw finish
- Displaying a desirable aged patina and in good order throughout
- Plaster form finished with golden tones over a darker ground
- Fascinating male bust with sculptor's inscription to rear - possibly reading Togle
- Raised upon a circular oak base offering fine grain interest, dressed with leather pad beneath

This is a charming antique male portrait bust, pleasingly naive and with beautiful colouration. Delivered polished and ready to display.

Search [London Fine for #18.7393](#) , or scan the QR code for more photos and details

DIMENSIONS

Max Width: 17cm (6.75")

Max Depth: 18cm (7")

Max Height: 34.5cm (13.5")

