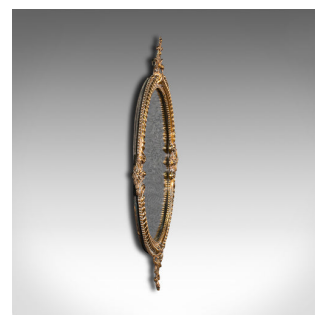


Small Antique Oval Hall Mirror, English, Gilt Metal, Glass, Vanity, Victorian



DESCRIPTION

Our Stock # 18.7358

This is a small antique oval hall mirror. An English, gilt metal and glass vanity mirror, dating to the late Victorian period, circa 1900.

- Charming mirror with an attractive frame
- Displays a desirable aged patina
- Gilt metal frame offers bright golden tones
- Quality glass plate in good order with a desirable light foxing
- Issuing plume of feather motif to the four corners with foliate adornments
- Chased pattern decoration with tightly beaded borders
- The mirror offers a clear, bright reflection
- Small hanging loop to rear for ease of wall mounting

This is a delightful small antique hall mirror, with an attractive gilt finish and lightly foxed reflection. Delivered polished and ready to display.

Search [London Fine for #18.7358](#) , or scan the QR code for more photos and details

DIMENSIONS

Max Width: 31.5cm (12.5")

Max Depth: 3cm (1.25")

Max Height: 41.5cm (16.25")

Mirror Plate Width: 17.5cm (7")

Mirror Plate Height: 25cm (9.75")

