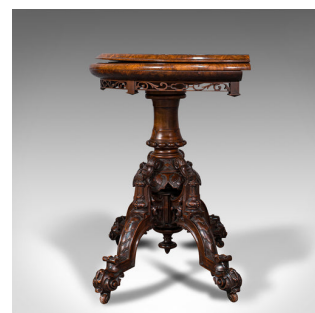
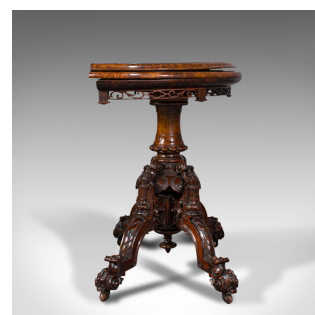


## Antique Card Table, English, Walnut, Inlay, Folding, Bridge, Games, Victorian



### DESCRIPTION

Our Stock # 18.7364

This is a striking antique card table. An English, book-matched walnut and boxwood inlay folding bridge games table, dating to the Victorian period, circa 1870.

- Beautiful Victorian craftsmanship for the finest gentleman's lounge
- Displaying a desirable aged patina, in good original order
- Superb book-matched walnut offers fine grain interest
- Deep russet hues beam beneath a wax polish finish
- Demi-lune in form, the attractive top graced with quality boxwood inlay
- Rotating with smooth action through 90-degrees, revealing a shallow card box
- Deep emerald green bridge baize in two parts, opening upon brass strap hinges
- The quality later baize set within a deep walnut frame with appealing figuring
  - Pierced fretwork apron adorns the top, dressing the gently rolled edge with eye-catching detail
- Turned baluster support over a foliate carved decorative bulb
- Gently arched knees finished with leaf motif uniting the leg and column with ornamental stretchers

### DIMENSIONS

Max Width: 85cm (33.5")  
 Max Depth: 47cm (18.5")  
 Max Height: 71.5cm (28.25")  
 Extended Width: 92cm (36.25")  
 Extended Depth: 85cm (33.5")  
 Extended Height: 70cm (27.5")  
 Baize Width: 81cm (32")  
 Baize Depth: 72cm (28.25")



Search [London Fine](#) for #18.7364, or scan the QR code for more photos and details