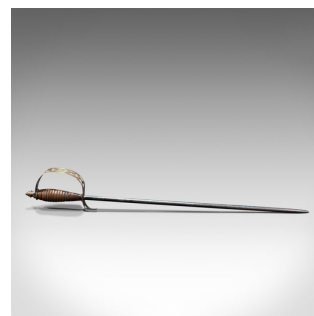
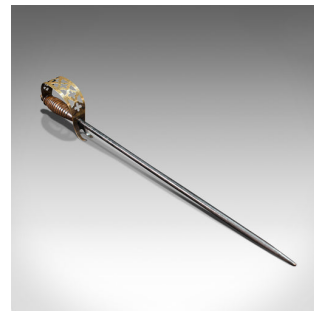


## Antique Poker, English, Oak, Brass, Steel, Fireside Tool, Edwardian, 1910



### DESCRIPTION

Our Stock # 18.7417

This is an antique sword poker. An English, oak, brass and steel fireside tool, dating to the Edwardian period, circa 1910.

- Fascinating and dashing tool to stoke the fireplace
- Displays a desirable aged patina and weathering
- Steel poker of slender proportion with consistent graphite finish
- Pierced brass hilt with open cross motif and presenting shimmering golden hues
- Superb ring turned oak handle with rich caramel hues and fine grain interest
- Maker's mark to reverse of the hilt reads 'Peerage - Made in England'

This is a charming and joyful antique sword poker, offering a dash of "daring-do" for the fireside. Delivered polished and ready to enjoy.

Search [London Fine for #18.7417](#) , or scan the QR code for more photos and details

### DIMENSIONS

Max Width: 5cm (2")

Max Depth: 9cm (3.5")

Max Height: 69cm (27.25")

