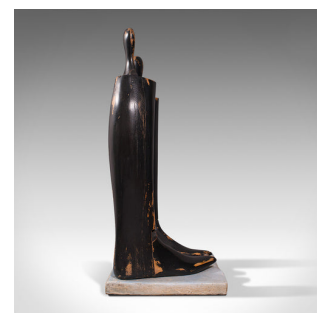
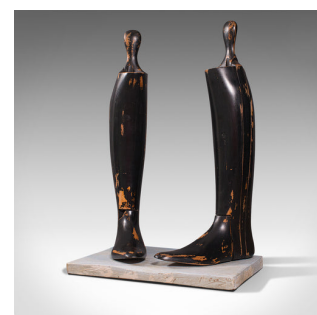


Antique Decorative Boot Tree, English, Beech, Ornamental, Shoe Last, Edwardian



DESCRIPTION

Our Stock # 18.7445

This is an antique decorative pair of boot trees. An English, beech and pine ornamental shoe last, dating to the Edwardian period, circa 1910.

- Tall, fascinating Edwardian decorative piece
- Displaying a desirable aged patina with appealing weathering
- Ebonised beech forms with deep black finish, lovingly worn through to show natural caramel hues
- Globular ovoid handles stand above elegant riding boot lasts
- Presented upon a painted pine base in a light blue wash with a stylised carved mark 'RC'

This is a charming antique decorative pair of boot trees, with ornamental Edwardian appeal and pleasingly weathered appearance. Delivered waxed, polished and ready to display.

Search [London Fine for #18.7445](#), or scan the QR code for more photos and details

DIMENSIONS

Max Width: 40cm (15.75")
Max Depth: 26.5cm (10.5")
Max Height: 60cm (23.5")

