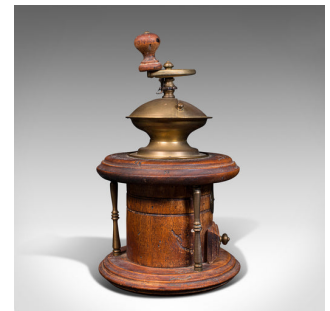
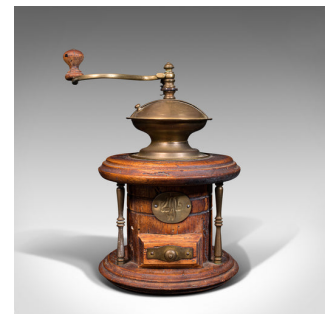


Vintage Manual Coffee Grinder, Continental, Fruitwood, Rotary Mill, Circa 1940



DESCRIPTION

Our Stock # 18.7452

This is a vintage manual coffee grinder. A Continental, fruitwood rotary coffee bean mill, dating to the mid 20th century, circa 1940.

- Wonderfully mechanical, ideal for decorative display
- Presenting a desirable aged patina throughout
- Fruitwood displays rich caramel hues and weathering commensurate with age
- Brass dome and handle show pleasing tarnish and mellow tones
- The serpentine crank handle sits proudly above the whole with tactile fruitwood finial

Sliding from left to right, the grinder mechanism is revealed beneath its cover

- Verdigris weathering adds distinction, surrounding the rotary shaft
- Small tray opens to the front, wherein the ground beans would present themselves for use

- Decorated with an oval plaque to front, stamped with the Italian spelling 'caffè'

- Trio of turned brass pilasters uniting the upper and lower forms
- Brass back plate situated upon the drawer front with a small circular pull

Search [London Fine for #18.7452](#), or scan the QR code for more photos and details

DIMENSIONS

Max Width: 19cm (7.5")

Max Depth: 19cm (7.5")

Max Height: 32.5cm (12.75")

