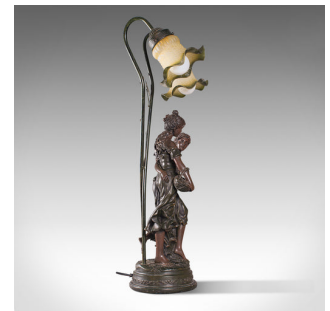
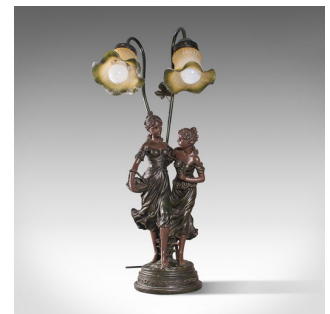


## Vintage Decorative Lamp, French, Spelter Bronze, Female, Figures, Table Light



### DESCRIPTION

Our Stock # 18.7084

This is a tall, vintage decorative lamp. A French, spelter bronze figural table light in the form of two females, dating to the late 20th century, circa 1970.

- Characterful lamp with Art Nouveau overtones
- Displaying a desirable aged patina throughout
- Spelter bronze in good order, with dark tones and patination
- Ornate, semi-opaque lamp shades of foliate form with petal detail
- Two highly detailed female figures present an eye-catching stand
- Their billowing dresses add a wonderful sense of motion to the whole
- Standing upon a circular base with leaf motif to the circumference
- Wonderfully lit by way of two warm white bayonet bulbs, the glow cascades over the figures
- Supplied with a generous length of quality cable with a power switch, and a British Standards compliant 3-pin plug

This is a fascinating vintage decorative lamp, with great character, wonderfully tactile spelter form and inviting warm glow. Delivered polished and ready for the home.

### DIMENSIONS

Max Width: 30cm (11.75")

Max Depth: 22cm (8.75")

Max Height: 64.5cm (25.5")



Search [London Fine](#) for #18.7084, or scan the QR code for more photos and details

+44 (0) 207 1833 511

London Fine Ltd  
 The Antique Village  
 The Old Whiteways Cider Factory  
 Hele, Devon, EX5 4PW

sales@londonfine.co.uk  
 E. & O. E.