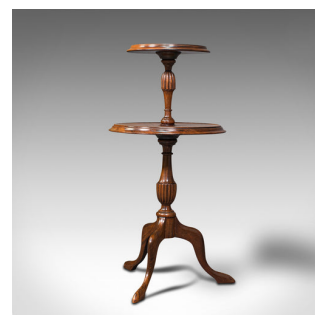
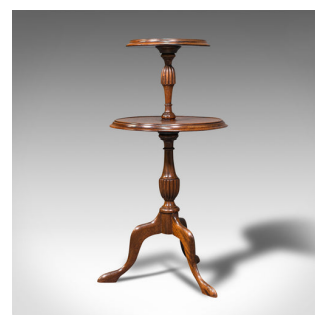
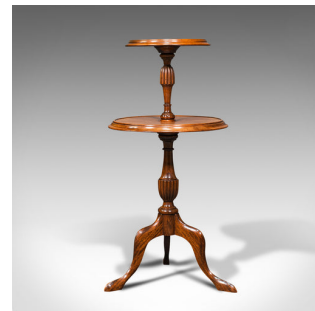


## Antique Two Tier Table, English, Mahogany, Afternoon Tea, Cake Stand, Edwardian



### DESCRIPTION

Our Stock # 18.7475

This is an antique two tiered table. An English, mahogany afternoon tea or cake stand, dating to the Edwardian period, circa 1910.

- Elegantly serve afternoon tea with this Edwardian stand
- Displaying a desirable aged patina throughout
- Select mahogany presents fine grain interest
- Rich caramel hues beam beneath a wax polish finish
- Arranged as two delightfully circular stands
- The upper tier with a diameter of 26.5cm (10.5")
- Tapered baluster supports with striking gadrooned bulb carvings
- Standing upon a trio of cabriole legs with pronounced knee and slipper feet

This is a charming antique two tiered table, offering Edwardian taste for your afternoon gatherings. Solid joints and construction, delivered waxed, polished and ready for the home.

Search [London Fine for #18.7475](#) , or scan the QR code for more photos and details

### DIMENSIONS

Max Width: 37cm (14.5")

Max Depth: 37cm (14.5")

Max Height: 77cm (30.25")

