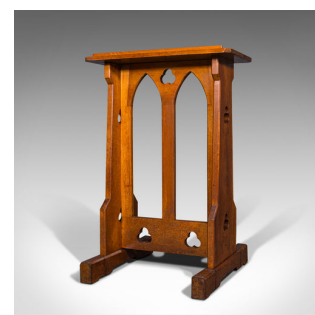
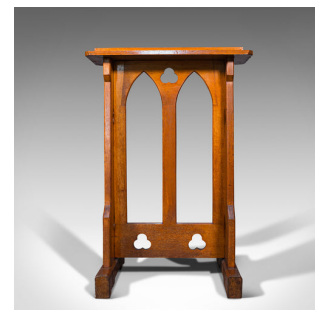


Antique Lectern, English, Oak, Oratory Stand, Ecclesiastical, Victorian, C.1900



DESCRIPTION

Our Stock # 18.7409

This is an antique lectern. An English, oak oratory stand with ecclesiastical taste, dating to the late Victorian period, circa 1900.

- Charming, adjustable lectern with appealing ecclesiastical overtones
- Displays a desirable aged patina and in good order
- Select oak shows fine grain interest beneath a wax polish finish
- Presents warm caramel hues and copious medullary rays
- Generous, wide top with document rest, over square cut edge with canted corners
- Evocative of church windows, the open carved fascia offers a striking visual scene
- Shaped stile sides offer support, with pierced spade-shaped carvings
- Monogram beneath the top engraved with the initials AM
- Fascinating articulated legs - hinged toes with iron socket plates
 - Independently adjustable, the toes can be arranged to add height or angle the lectern
 - Engraved maker's mark to the side appears to read 'M.C. School Furnishing Co'

Search [London Fine for #18.7409](#) , or scan the QR code for more photos and details

DIMENSIONS

- Standard Width: 68.5cm (27")
- Standard Depth: 60cm (23.5")
- Standard Height: 99.5cm (39.25")
- Raised Width: 68.6cm (27")
- Raised Depth: 35.5cm (14")
- Raised Height: 107cm (42.25")

LIST PRICE

£895.00

