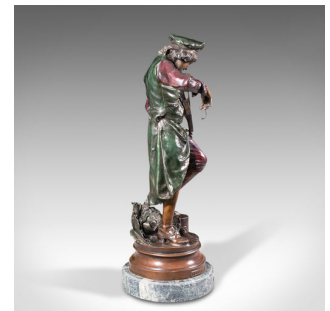
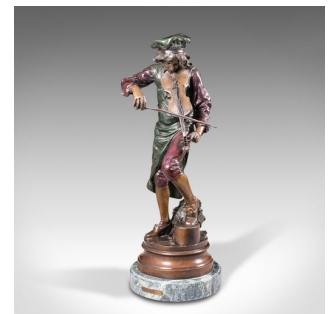


Tall Vintage Violinist Statue, Continental, Bronze, Male Figure, After Gaudez



DESCRIPTION

Our Stock # 18.7505

This is a tall vintage violinist statue. A Continental, bronze male figure upon a marble base in the manner of Adrien Etienne Gaudez (French 1845-1902), dating to the late 20th century, circa 1970.

- Of superb proportion and a mournful intensity
- Displaying a desirably aged patina and heavy at 11.24kg (24.7lb)
- Pleasingly sculpted bronze offers appealing weathering and colour
- Presents a young violinist standing upon an upturned pot, titled 'Lulli' to the socle
 - Belgian marble base with striking veins, dressed with a plaque bearing the name Gaudez

This is a delightfully tall vintage violinist statue, with great colour and pose. Delivered polished and ready to display.

Search [London Fine for #18.7505](#) , or scan the QR code for more photos and details

DIMENSIONS

Max Width: 25.5cm (10")

Max Depth: 19cm (7.5")

Max Height: 52.5cm (20.75")

