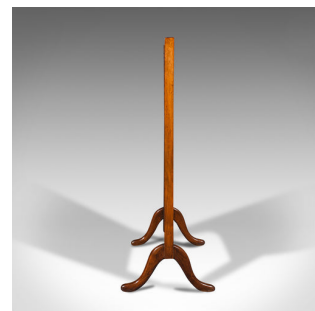
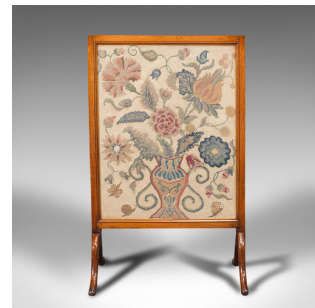


## Antique Embroidered Fire Screen, Walnut, Needlepoint Tapestry, Victorian, 1900



### DESCRIPTION

Our Stock # 18.7408

This is an antique embroidered fire screen. An English, walnut framed glass screen with needlepoint tapestry, dating to the Victorian period, circa 1900.

- Attractive fire screen with great colour and elegant frame
- Displaying a desirable aged patina - frame and glass in very good order
- Quality walnut frame with fine grain interest and inviting caramel hues
- Embroidered panel presents a needlepoint tapestry with spring flower decoration
- Raised upon a quartet of relaxed cabriole legs with elongated toes

This is a charming antique embroidered fire screen. Set to enhance and shield against the fireplace, delivered waxed, polished and ready for the home.

Search [London Fine for #18.7408](#), or scan the QR code for more photos and details

### DIMENSIONS

Max Width: 48.5cm (19")

Max Depth: 28.5cm (11.25")

Max Height: 76cm (30")

