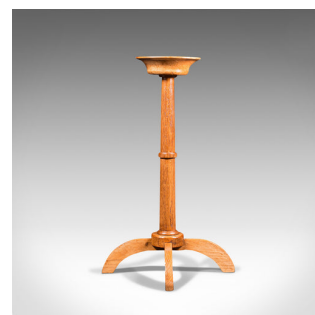
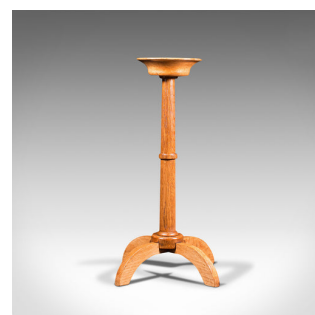
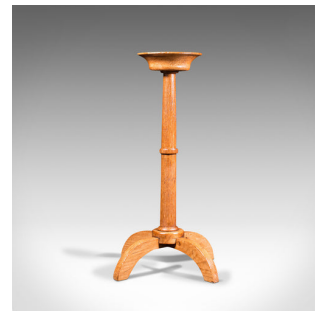


Antique Torchere, English, Oak, Candle Stand, Cotswold School, Arts And Crafts

**DESCRIPTION**

Our Stock # 18.7511

This is an antique torchere. An English, oak candle stand in the manner of the Cotswold school or Arts & Crafts movement with ecclesiastical overtones, dating to the early 20th century, circa 1920.

- Appealing light oak hues and attractive forms
- Displaying a desirable aged patina and in good order
- Select light oak displays fine grain interest
- Mellow caramel hues presented beneath a quality wax polish finish
- Flared candle nozzle offers a maximum diameter of 8.5cm (3.25")
- Standing upon four distinctive arched feet with square cut toes

This is a charming antique torchere, with Arts and Crafts overtones in the manner of the Cotswold school. Delivered waxed, polished and ready to use.

Search [London Fine for #18.7511](#), or scan the QR code for more photos and details

DIMENSIONS

Max Width: 30cm (11.75")
Max Depth: 30cm (11.75")
Max Height: 49cm (19.25")
Top Diameter: 14.5cm (5.75")
Candle Nozzle Diameter: 8.5cm (3.25")

