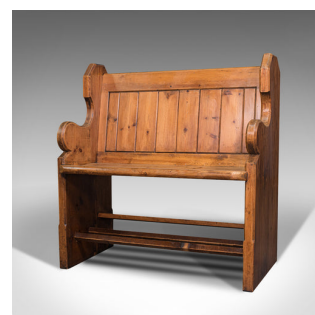
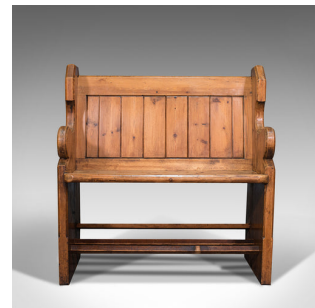


Antique Love Seat, English, Pine, Bench, Pew, Ecclesiastic Taste, Victorian



DESCRIPTION

Our Stock # 18.7538

This is an antique love seat. An English, pine two-seat bench or pew with ecclesiastic taste, dating to the Victorian period, circa 1900.

- Relax upon this wonderfully intimate bench for two
- Displaying a desirable aged patina throughout
- Victorian pine shows fine grain interest with traditionally pegged stocks
- Warm caramel hues beam beneath a wax polish finish
- Serpentine carved stiles present a dashing profile with winged form
- Comfortable dished seat of generous width at 78.5cm (31")
- Lower rests useful as a shoe rack - ideal for the entrance hall

This is an attractive antique love seat, with fine colour and superb form. Of comfortable proportion and perfect for the hall or conservatory. Solid joints and construction, delivered waxed, polished and ready for the home.

Search [London Fine for #18.7538](#) , or scan the QR code for more photos and details

DIMENSIONS

Max Width: 87.5cm (34.5")
Max Depth: 49.5cm (19.5")
Max Height: 92cm (36.25")
Seat Width: 78.5cm (31")
Seat Depth: 33cm (13")
Seat Height: 47cm (18.5")

