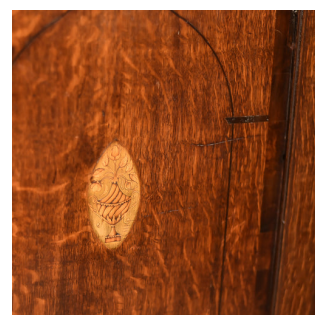
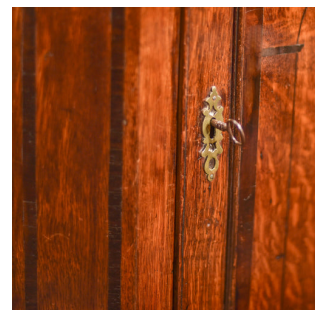


## Georgian Oak Corner Cabinet on Stand, c.1760



### DESCRIPTION

Our Stock # LFA-1350 This is an antique, Georgian corner cabinet on stand dating to c.1760. The highly desirable colour and patina of this cabinet sets it apart, the oak displays attractive grain throughout and is lifted further by the upper frieze, finished in a well figured flame mahogany band beneath a generous cornice moulding. The cupboard door features a single field panel with a central urn and flora inlaid motif, framed by a shaped ebony string detail with fanned shell inlays to each corner. The original 18th Century key passes through a pierced brass escutcheon to lock the door and enclose three serpentine-fronted shelves within. The lower frieze offers a central, cock beaded drawer flanked by a pair of smaller, faux drawers each dressed with brass, swan neck handles.

Search [London Fine for #LFA-1350](#) or scan the QR code for more photos and details

### DIMENSIONS

Max Width: 80cm (31.5")  
 Max Depth: 47cm (18.5")  
 Max Height: 168cm (66.25")

