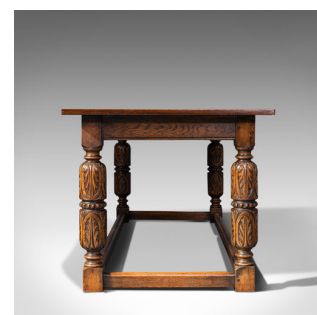




Antique Refectory Table, English, Oak, Dining, Jacobean Revival, Edwardian, 1910



DESCRIPTION

Our Stock # 18.7523

This is a large antique refectory table. An English, 6-8 seat oak dining table with Jacobean revival taste, dating to the Edwardian period, circa 1910.

- Classic English country farmhouse form and Jacobean overtones
- Displaying a desirable aged patina and in good order throughout
- Select oak stocks with striking grain interest
- Deep russet hues radiate beneath a quality wax polish finish
- Generously sized three plank top finished with dashing cleated ends
- The square section apron set within broad shoulders to each corner
- Raised upon bold, cupped legs decorated with broad leaf carvings
- United by stretchers at each block foot for unwavering stability

This is a superb large antique refectory table with comfortable seating for 6 - 8 diners and with pleasingly figured oak stocks. Set to dazzle at a dinner party or for the family gathering, this table will delight. Solid joints and construction, delivered waxed, polished and ready for the home.

Search [London Fine for #18.7523](#) , or scan the QR code for more photos and details

DIMENSIONS

Max Width: 197cm (77.5")

Max Depth: 84cm (33")

Max Height: 75cm (29.5")

Kneehole Height: 62cm (24.5")

