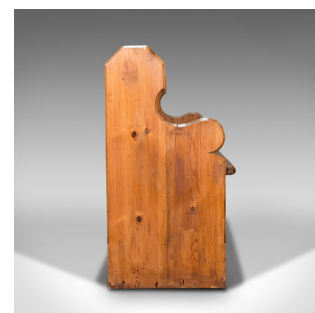


Antique Bench Seat, English, Pine, Pew, Ecclesiastic Taste, Victorian, C.1900



DESCRIPTION

Our Stock # 18.7565

This is an antique bench seat. An English, pine three-seat pew with ecclesiastic taste, dating to the Victorian period, circa 1900.

- Relax upon this generously accommodating bench for three
- Displays a desirable aged patina throughout
- Victorian pine offers fine grain interest with traditionally pegged stocks
- Pleasing caramel hues beam beneath a wax polish finish
- Delightfully carved stiles present a dashing profile with deep winged form
- Comfortable seat of generous width at 134.5cm (53")
- Lower rests useful as a shoe rack - ideal for the large entrance hall

This is an attractive antique bench seat, with appealing colour and eye-catching form. Of comfortable proportion and perfect for the large hall or conservatory. Solid joints and construction, delivered waxed, polished and ready for the home.

Search [London Fine for #18.7565](#) , or scan the QR code for more photos and details

DIMENSIONS

- Max Width: 143cm (56.25")
- Max Depth: 49cm (19.25")
- Max Height: 92cm (36.25")
- Seat Width: 134.5cm (53")
- Seat Depth: 33cm (13")
- Seat Height: 46.5cm (18.25")

