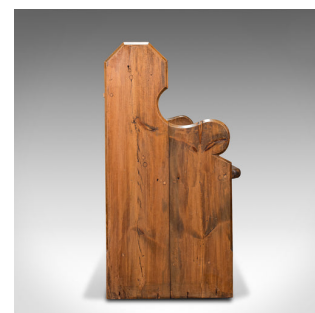


## Antique Hallway Bench, English, Pine, Reception, Pew, Ecclesiastic, Victorian



### DESCRIPTION

Our Stock # 18.7566

This is an antique hallway bench. An English, pine three-seat reception hall pew with ecclesiastic taste, dating to the late Victorian period, circa 1900.

- Unwind upon this accommodating hallway bench for three
- Displaying a desirable aged patina throughout
- Victorian pine shows fine grain interest and offers traditionally pegged stocks
- Attractive caramel hues presented beneath a wax polish finish
- Dashing carved stiles present a distinctive profile with deep winged form
- Comfortable seat of generous width at 133cm (52.25") and height of 46cm (18")
- Lower rest rails useful as a shoe rack - ideal for the large entrance hall

This is an attractive antique hallway bench, with appealing colour and delightful form. Of comfortable proportion and perfect for the grand hallway or conservatory. Solid joints and construction, delivered waxed, polished and ready for the home.

Search [London Fine for #18.7566](#) , or scan the QR code for more photos and details

### DIMENSIONS

Max Width: 142.5cm (56")  
 Max Depth: 49.5cm (19.5")  
 Max Height: 92cm (36.25")  
 Seat Width: 133cm (52.25")  
 Seat Depth: 33cm (13")  
 Seat Height: 46cm (18")

