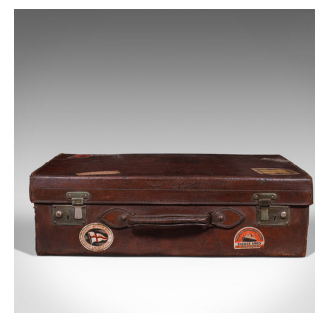


Antique Gentleman's Suitcase, English, Leather, Case, Travel, Edwardian, C.1910



DESCRIPTION

Our Stock # 18.7574

This is an antique gentleman's suitcase. An English, leather overnight case or lightweight travel bag, dating to the Edwardian period, circa 1910.

- Graced with decades of travelling tales
- Displays a desirable aged patina
- Quality leather in rich russet hues
- Broad, stitched seams adds to the durable quality
- The stout leather handle flanked by a pair of sliding brass clasps
- Inset locks to both clasps – key absent
- Wonderfully aged travel labels for Buenos Aires and Italy et al add great appeal
- Opens to reveal a bright cream interior

This is a highly appealing antique suitcase, well suited to a quick overnight trip or as worldly-wise decor in a curated room. Delivered ready for display or travel.

Search [London Fine for #18.7574](#) , or scan the QR code for more photos and details

DIMENSIONS

Max Width: 61cm (24")
Max Depth: 19cm (7.5")
Max Height: 38cm (15")

