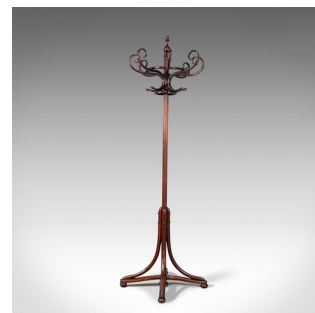
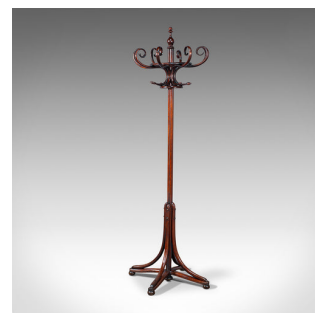
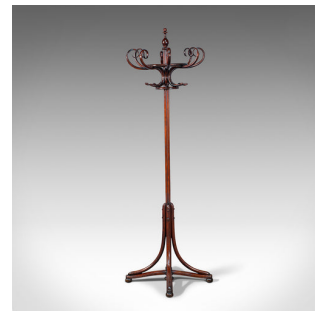


Antique Bentwood Coat Stand, English, Hallway Rack, After Thonet, Edwardian

**DESCRIPTION**

Our Stock # 18.7527

This is an antique bentwood coat stand. An English, beech hallway rack in the manner of Thonet, dating to the Edwardian period, circa 1910.

- Presented in its original splendour, with slight natural cant
- Displays a desirable aged patina throughout
- Beech shows fine grain interest and deep russet hues
- Quality wax polish finish enhances the whole
- Small turned finial to centre, standing proudly above the whole
- Eight serpentine coat hooks with dashing scrolled forms
- Delightful, lobed under-hooks ideal for hats, gloves or umbrellas
- Standing upon a set of four splayed legs with stretchers and squat bun feet

This is a pleasingly aged antique bentwood coat stand, sure to add Edwardian elegance to the hallway. Delivered waxed, polished and ready to serve.

Search [London Fine for #18.7527](#) , or scan the QR code for more photos and details

DIMENSIONS

Max Width: 72cm (28.25")

Max Depth: 74cm (29.25")

Max Height: 207.5cm (81.75")

