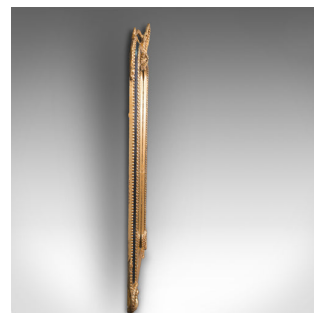
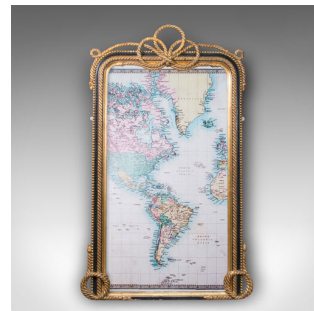


## Very Large Antique Wall Mirror, English, Gilt, Overmantel, Dressing, Regency



### DESCRIPTION

Our Stock # 18.7562

This is a very large antique wall mirror. An English, giltwood and ebonised grand overmantel or dressing mirror, dating to the Regency period, circa 1820.

- Of the most striking, nautical-inspired form and grand proportion
- Displays a desirable aged patina and in good order throughout
- Ornate, braided rope detail to the giltwood frame with bright golden hues
- The impressive double bow knot surmount stands proudly above the plate
- Smaller loop knots to the base show further fine rope detail
- Quality, later mirror plate with very light, desirable foxing
- Of superb size for the largest of fireplaces or for the dressing room
- Pair of small brass loops to each side aid secure wall anchoring

This is a fascinating and large antique wall mirror, with delightfully detailed maritime rope frame and generous proportions. With a clear, bright reflection, this mirror will delight those who stand before it. Solid joints and construction, delivered waxed, polished and ready for the home.

Search [London Fine for #18.7562](#), or scan the QR code for more photos and details

### DIMENSIONS

Max Width: 111cm (43.75")  
 Max Depth: 6.5cm (2.5")  
 Max Height: 179cm (70.5")  
 Mirror Plate Width: 78.5cm (31")  
 Mirror Plate Height: 147cm (57.75")

