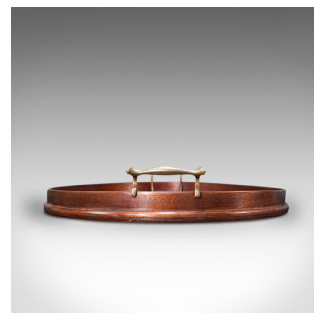
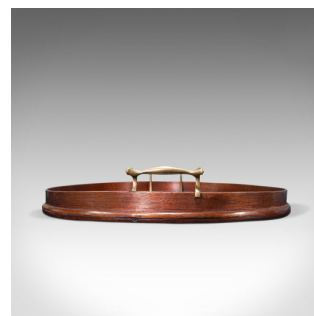


Antique Serving Tray, English, Mahogany, Brass, Boxwood Inlay, Georgian, C.1800



DESCRIPTION

Our Stock # 18.7623

This is an antique serving tray. An English, mahogany and brass butler's platter, dating to the Georgian period, circa 1800.

- Serve your favourite drinks with this delightful antique tray
- Displays a desirably aged patina - one small loss to handle under close inspection
- Select mahogany shows fine grain interest and rich caramel hues
- Presented with a quality wax polish finish
- Decorative scallop shell inlay to centre, accentuated in boxwood
- Delightful pair of sinuous brass handles dress the galleried rim

This is an attractive antique serving tray, lovingly appointed in the Georgian tradition. Delivered waxed, polished and ready to serve.

Search [London Fine for #18.7623](#) , or scan the QR code for more photos and details

DIMENSIONS

Max Width: 56.5cm (22.25")
Max Depth: 37cm (14.5")
Max Height: 5.5cm (2.25")
Internal Width: 55cm (21.75")
Internal Depth: 35.5cm (14")
Internal Height: 2.5cm (1")

