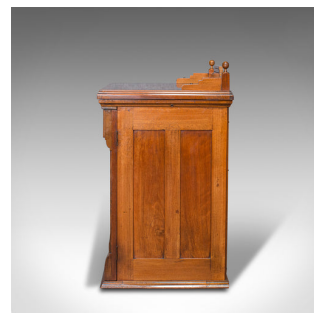


Antique Sewing Machine Cabinet, English, Walnut, Machinist Console, Circa 1920



DESCRIPTION

Our Stock # 18.7558

This is an antique sewing machine cabinet. An English, walnut machinist's console, dating to the early 20th century, circa 1920.

- Truly captivating machine cabinet with Art Deco taste and fine craftsmanship
- Displaying a desirable aged patina throughout
- Striking walnut stocks present fine grain interest and rich caramel hues
- Finished to a high standard, the cabinet ideal for central room placement
- Stout lid with delightful Art Deco back stand opens to reveal a Jones sewing machine
 - Finished in a deep black enamel, the machine rises upon a fully automated mechanism

- Storage beneath the machine is accessed by tilting the base backwards
- Fascinating machine mechanism rotates by way of the large foot pedal
- Decorated cabinet doors conceal the lower mechanism and pedal
- Inset compartments house a boxed set of accessories and a later oil can
- The machine decorated with attractive foliate motif bearing the company name and Royal Warrant

Search [London Fine for #18.7558](#), or scan the QR code for more photos and details

DIMENSIONS

Cabinet Width: 63cm (24.75")
 Cabinet Depth: 50.5cm (20")
 Cabinet Height: 87.5cm (34.5")
 Working Width: 126cm (49.5")
 Working Depth: 75cm (29.5")
 Working Height: 73cm (28.75")
 Height Inc. Machine 96cm (37.75")

LIST PRICE

£1,950.00

