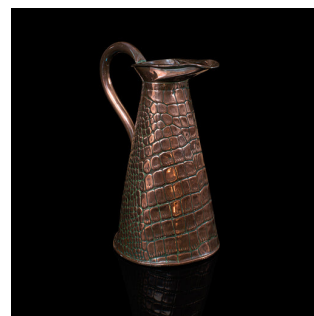
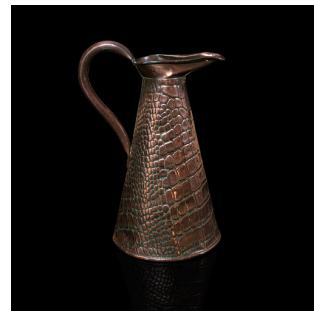


Antique Serving Ewer, English, Copper, Jug, Decorative, Arts & Crafts, Victorian



DESCRIPTION

Our Stock # 18.7603

This is an antique serving ewer. An English, copper jug with decorative finish, dating to the Arts and Crafts period, circa 1900.

- Distinctive antique ewer with fine weathering
- Displays a desirable aged patina with time-worn impressions to form
- Lightly polished copper presents appealing amber hues
- Embossed finish in the Neptune 'Lizard Skin' pattern catches the eye
 - Neptune maker's mark to base a trademark of Joseph Sankey & Sons, Wolverhampton
- Further stamped to the base with the number 4 size mark

This is a fascinating antique serving ewer, with great finish and aged patina. Delivered polished and ready to display.

Search [London Fine for #18.7603](#) , or scan the QR code for more photos and details

DIMENSIONS

Max Width: 15.5cm (6")

Max Depth: 20cm (7.75")

Max Height: 28.5cm (11.25")

LIST PRICE

£675.00

