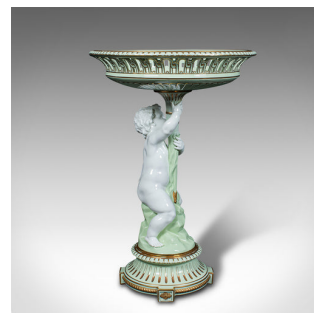
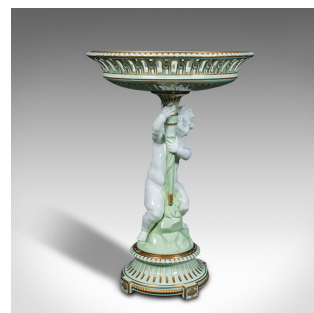
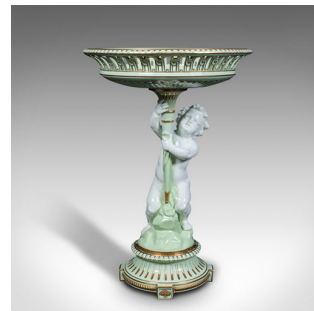


Antique Cherub Compote Dish, English, Decorative Putti, Grape Bowl, Victorian



DESCRIPTION

Our Stock # 18.7601

This is an antique cherub compote dish. An English, ceramic decorative putti grape bowl, dating to the Victorian period, circa 1880.

- Of bold, cherubic form and generous proportion
- Displays a desirable aged patina and in very good order
- Ceramic painted in light green over white and accentuated with gilt finish
 - Vivacious cherub figure to the centre sits beneath the eye-catching pierced rim above
 - Gilt fluting adds decoration the underside of the dish and against the tapered base

This is a fascinating antique cherub compote dish or grape bowl. With a charming putti adding copious character, this dish will make a fine centrepiece for any table. Delivered polished and ready to enjoy.

Search [London Fine for #18.7601](#) , or scan the QR code for more photos and details

DIMENSIONS

Max Width: 26cm (10.25")
 Max Depth: 26cm (10.25")
 Max Height: 38.5cm (15.25")
 Bowl Diameter: 19.5cm (7.75")

LIST PRICE

£1,195.00

