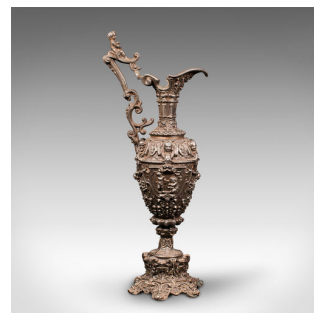
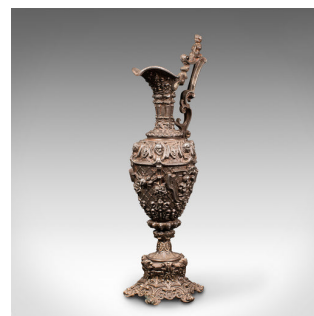
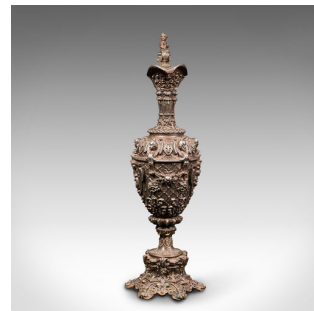


Antique Candelabra, French, Spelter, Candlestick, Ewer, Victorian, Circa 1900



DESCRIPTION

Our Stock # 18.7633

This is an antique candelabra. A French, bronze spelter candlestick in the form of a serving ewer, dating to the Victorian period, circa 1900.

- Profusely decorative candelabra with great tonality
- Displaying a desirably aged patina and in good original order
- Spelter Bronze with natural light graphite finish offers copious fascination
- Candle nozzle, tapering, with an opening diameter of 25mm (1")
- Adorned with cherubic appeal, a putti figure sits proudly atop the handle
- The globular body with beaded masques above foliate and grape motif
- Tapered base with scrolled pattern finish has the maker's mark LSF 1

This is a fascinating antique candelabra, with strong ornate taste in the French tradition. Solid joints and construction, delivered waxed, polished and ready for the home.

Search [London Fine for #18.7633](#), or scan the QR code for more photos and details

DIMENSIONS

Max Width: 14.5cm (5.75")
 Max Depth: 18cm (7")
 Max Height: 44.5cm (17.5")
 Opening Diameter: 2.5cm (1")

LIST PRICE

£595.00

