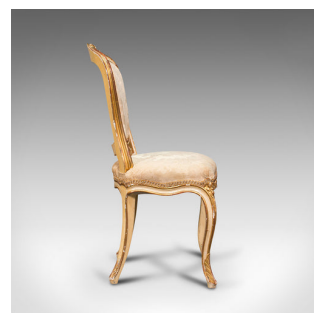


## Antique Boudoir Chair, French, Giltwood, Bedroom Dressing Seat, Victorian, 1900



### DESCRIPTION

Our Stock # 18.7618

This is an antique boudoir chair. A French, giltwood and silk cotton bedroom dressing seat, dating to the Victorian period, circa 1900.

- Beautiful small chair set to grace any room
- Displays a desirable aged patina, some marks commensurate with careful use
- Striking giltwood frame presents wonderful golden hues
- Quality silk cotton upholstery with appealing foliate pattern
- Shield-shape back rest with foliate carved top rail and inset cushion pad
- Traditionally stuffed seat cushion offers comfort over supportive webbing
- Sinuous front rail with carved sash and flower garland carving
- Serpentine cabriole legs with distinctive carved knees and pad feet

This is a delightful antique boudoir chair, with great colour and carved frame. Solid joints and construction, delivered waxed, polished and ready for the home.

Search [London Fine for #18.7618](#) , or scan the QR code for more photos and details

### DIMENSIONS

Max Width: 46cm (18")  
 Max Depth: 47.5cm (18.75")  
 Max Height: 86.5cm (34")  
 Seat Width: 46cm (18")  
 Seat Depth: 36cm (14.25")  
 Seat Height: 47cm (18.5")

